



**** PUBLIC NOTICE ****

MAJOR ROUTE AND SCHEDULE CHANGES AND PARATRANSIT

Liberty Transit is seeking public comments on major route and schedule changes in accordance with the recently approved Transit Management Plan including implementing complementary paratransit services.

The proposed bus routes, schedule and complementary paratransit service plan are available at Hinesville, Walthourville and Flemington City Halls or <http://www.libertytransit.org>.

Open House

September 12, 2018 - 5:30 to 6:30 PM
Walthourville City Hall, Downstairs Conference Room
222 Busbee Road, Walthourville

Public Hearing

September 20, 2018 at 3:00 PM
Hinesville City Hall Council Room
115 East M.L. King, Jr. Drive, Hinesville

Please note the public comment period closes on September 27, 2018. If you have any comments or questions, please contact Theodis Jackson, Liberty Transit General Manager, (912) 877-1472 or theodis.jackson@transdev.com.

Recommended Service Changes

- One route for Fort Stewart.
- All routes will stop at the Liberty Regional Medical Center.
- More direct routes.
- Consistent and simple schedule.
- Match current routes where possible.

Highlights:

New route 1 “red” will have consistent headway of 75 minutes between buses with 11 runs which includes service runs 3 times a day to Walthourville and 8 times to the YMCA.

(Replaces current route 8 “orange” with mixed headways with 13 runs including service 3 times a day to Walthourville 2 times per day to YMCA.)

New route 2 “green” will have consistent headway of 90 minutes between buses with 9 runs.

(Replaces the current route 7 “green” with mixed headways with 9 runs including service 2 times a day to Savannah Tech on Mon-Thur and 2 times a day to Food Lion on Mon-Fri.)

New Route 3 “blue” will have consistent headway of 90 minutes between buses with 6 runs and no limited service.

(Replaces current route 6 “purple” with mixed headways including 3 times a day limited service to north Fort Stewart).

Proposed effective date for the new routes and schedule changes is November 1st, 2018.

Current and proposed route maps and schedules are shown on the back side of this flyer.

“COMPLEMENTARY PARATRANSIT SERVICES”

Public transit agencies that run fixed route services must also provide ADA “complementary paratransit services” for those who are unable to use accessible fixed route services. This includes the inability to access the buses, transit stops, facilities, or to independently navigate through the system.

Liberty Transit currently provides service to the severely disabled using a “deviated route” paratransit service where a trip is called in by a certified individual with the bus deviating from the route for the pickup. Liberty Transit has been working with the Federal Transit Administration to transition from “deviated route” to a “complementary paratransit services”, stand alone paratransit service that complements the fixed route system.

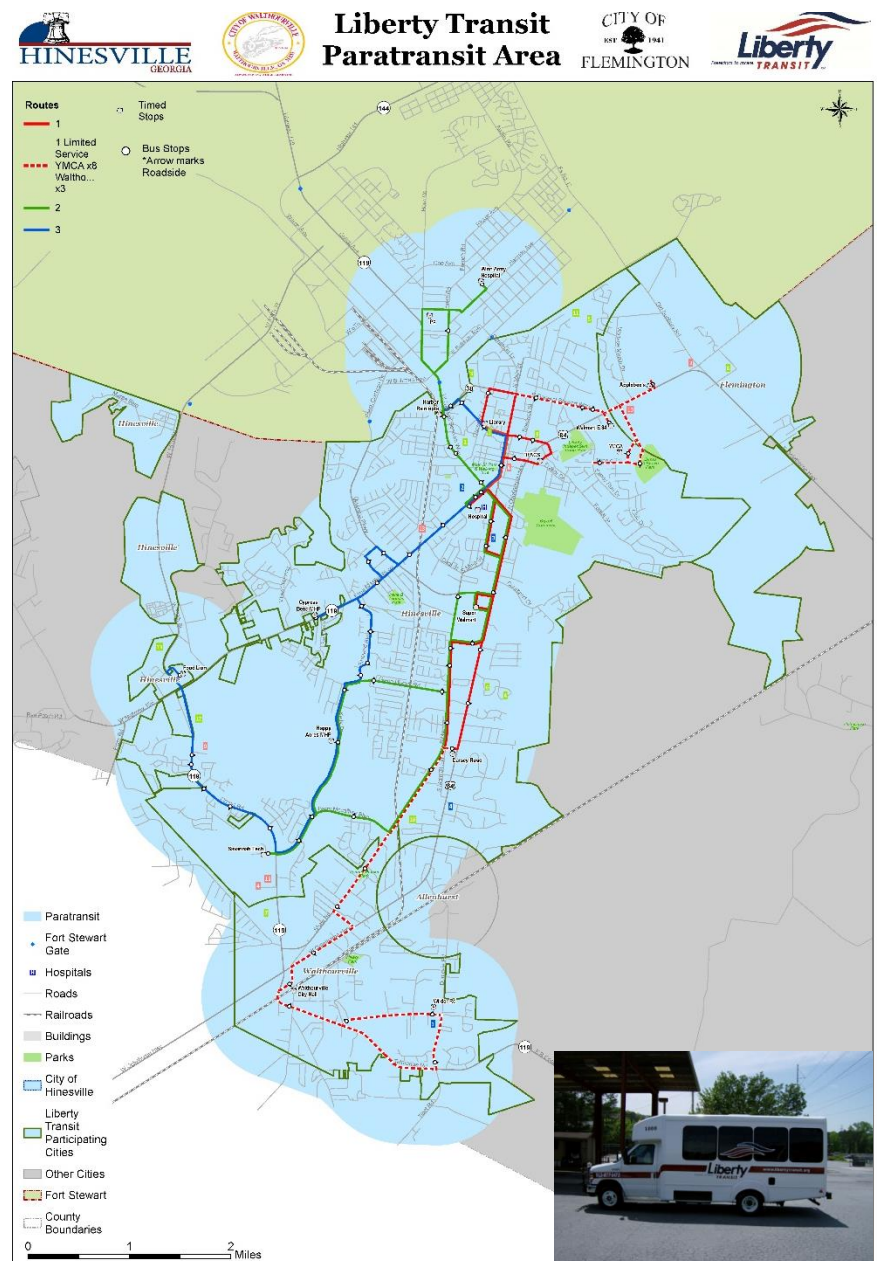
Complementary paratransit provides a high level of service and dependability with at least two buses available at any one time; extensive driver training and accurate documentation to log each trip. Liberty Transit paratransit services will operate using specialized buses during the same hours as the regular bus service to provide inclusive transit service to the severely disabled.

The proposed service area is shown on the map and includes all of Hinesville, Flemington, Walthourville plus parts of Liberty and Long Counties, Fort Stewart and Allenhurst that are within ¼ mile of a fixed route.

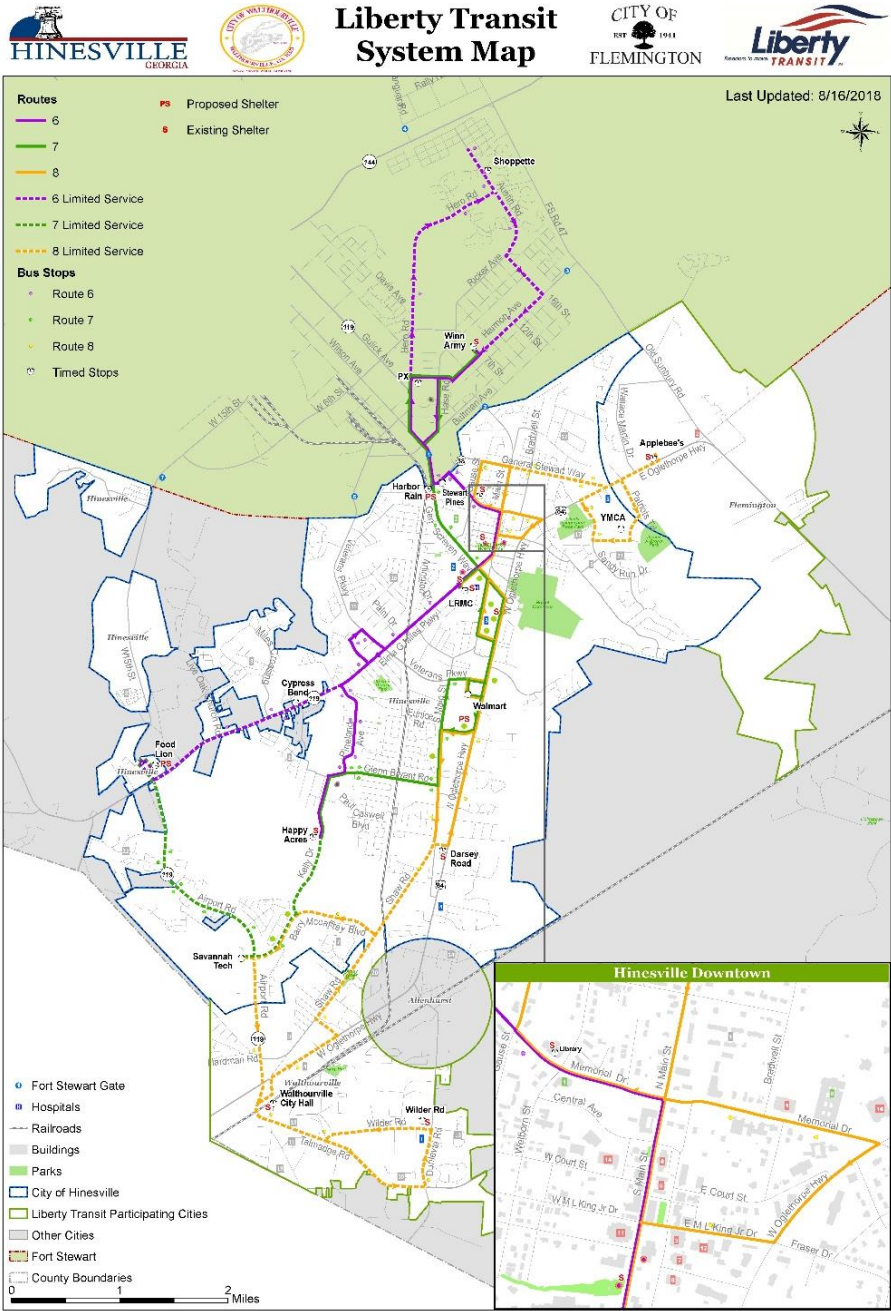
We anticipate starting this service on November 1, 2018.

FOR POLICY, APPLICATIONS AND RIDE GUIDE

GO TO: <http://libertytransit.org/>



Current Route Map & Schedule
<http://libertytransit.org/>



Route 6 (Monday - Friday)

Northbound					Southbound				Northbound
LRMC	Library	PX	Shoppette	Winn Army	Stewart Pines Apts	Library	Cypress Bend MHP	Food Lion Plaza	Happy Acres MHP
1	2	3	4	5	6	7	8	9	10
6:09a	6:15a	6:25a	6:34a	6:43a	6:51a	6:54a	--	--	7:14a
7:29a	7:35a	7:45a	--	7:49a	7:57a	8:00a	--	--	8:20a
8:35a	8:41a	8:51a	--	8:55a	9:03a	9:06a	--	--	--
--	--	--	--	--	2:35p	2:38p	2:52p	2:59p	3:16p
3:31p	3:37p	3:47p	3:56p	4:05p	4:13p	4:16p	4:30p	4:37p	4:54p
5:09p	5:15p	5:25p	5:34p	5:43p	5:51p	5:54p	6:08p	6:15p	6:32p
6:47p	6:53p	7:03p	--	7:07p	7:15p	7:18p	7:32p	7:39p	7:56p

Route 7 (Monday - Thursday)

Northbound				Southbound				
Happy Acres MHP	Walmart	PX	Winn Army	Harbor Rain Apts	Walmart	Happy Acres MHP	Savannah Tech	Food Lion Plaza
1	2	3	4	5	6	7	8	9
5:50a	6:05a	6:25a	6:30a	6:38a	6:51a	7:12a	7:20a	7:32a
7:50a	8:05a	8:25a	8:30a	8:38a	8:51a	9:12a	--	--
9:12a	9:27a	9:47a	9:52a	10:00a	10:13a	10:34a	--	--
10:34a	10:49a	11:09a	11:14a	11:22a	11:35a	11:56a	--	--
11:56a	12:11p	12:31p	12:36p	12:44p	12:57p	1:18p	1:26p	1:38p
1:56p	2:11p	2:31p	2:36p	2:44p	2:57p	3:18p	--	--
3:18p	3:33p	3:53p	3:58p	4:06p	4:19p	4:40p	--	--
4:40p	4:55p	5:15p	5:20p	5:28p	5:41p	6:02p	--	--
6:02p	6:17p	--	--	6:29p	6:42p	7:03p	--	--

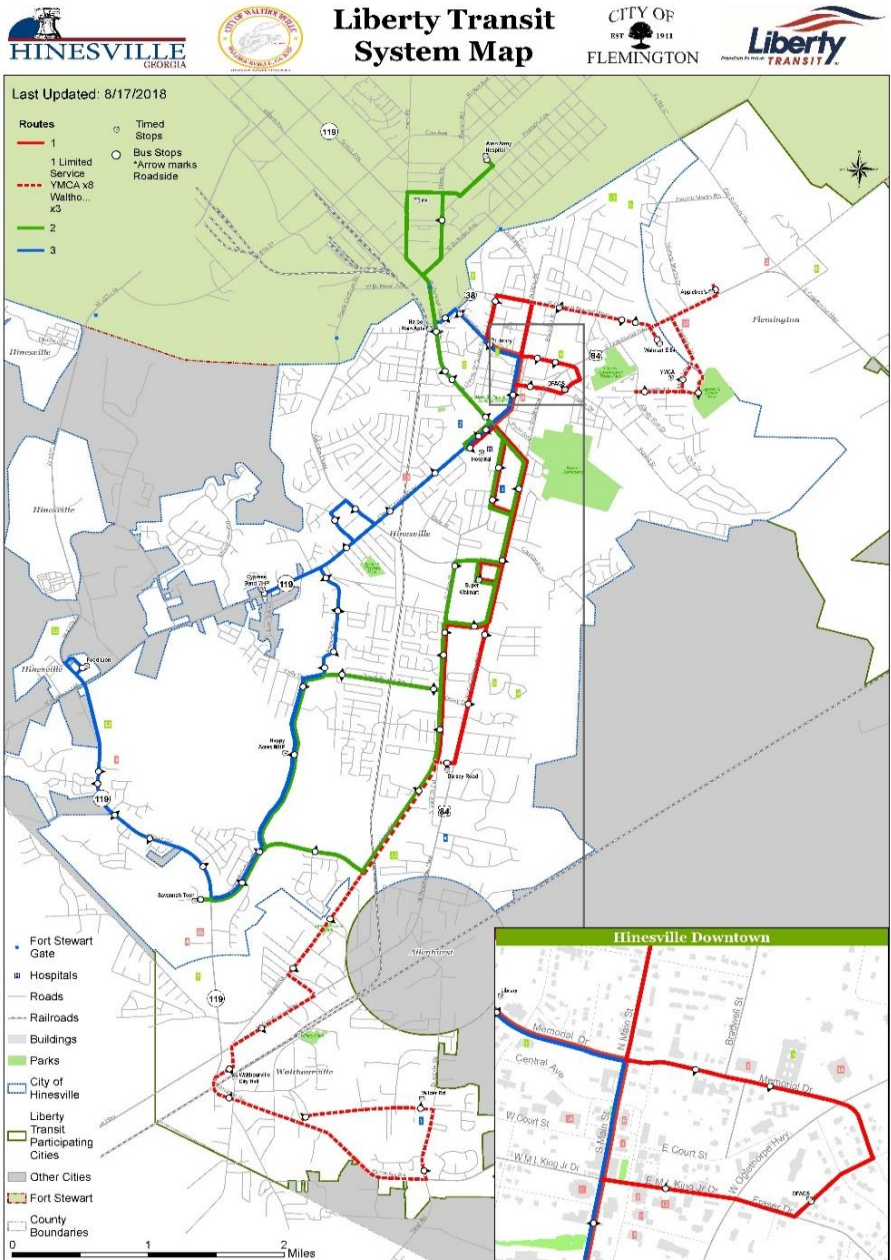
Route 7 (Friday)

Northbound				Southbound				
Happy Acres MHP	Walmart	PX	Winn Army	Harbor Rain Apts	Walmart	Happy Acres MHP	Savannah Tech	Food Lion Plaza
1	2	3	4	5	6	7	8	9
5:50a	6:05a	6:25a	6:30a	6:38a	6:51a	7:12a	--	7:30a
7:48a	8:03a	8:23a	8:28a	8:36a	8:49a	9:10a	--	--
9:10a	9:25a	9:45a	9:50a	9:58a	10:11a	10:32a	--	--
10:32a	10:47a	11:07a	11:12a	11:20a	11:33a	11:54a	--	--
11:54a	12:09p	12:29p	12:34p	12:42p	12:55p	1:16p	--	1:34p
1:52p	2:07p	2:27p	2:32p	--	--	--	--	--
3:22p	3:37p	3:57p	4:02p	4:10p	4:23p	4:44p	--	--
4:44p	4:59p	5:19p	5:24p	5:32p	5:45p	6:06p	--	--
6:06p	6:21p	--	--	6:33p	6:46p	7:07p	--	--

Route 8 (Monday - Friday)

Northbound					Southbound				Northbound	
Walmart	LRMC	Library	YMCA	Applebees	LRMC	Walmart	Savannah Tech	Wilder Road	Walthourville City Hall	Darsey Road
1	2	3	4	5	6	7	8	9	10	11
6:02a	6:11a	6:17a	--	--	6:27a	6:36a	--	--	--	6:43a
6:52a	7:01a	7:07a	--	--	7:18a	7:27a	7:50a	8:01a	8:09a	8:19a
8:28a	8:37a	8:43a	--	--	8:54a	9:03a	--	--	--	9:10a
9:19a	9:28a	9:34a	--	--	9:45a	9:54a	--	--	--	10:01a
10:10a	10:19a	10:25a	10:35a	10:40a	10:50a	10:59a	--	--	--	11:06a
11:15a	11:24a	11:30a	--	--	11:40a	11:49a	--	--	--	11:56a
12:05p	12:14p	12:20p	--	--	12:30p	12:39p	1:00p	1:10p	1:17p	1:25p
1:34p	1:43p	1:49p	1:59p	2:04p	2:14p	2:23p	--	--	--	2:30p
2:39p	2:48p	2:54p	--	--	3:04p	3:13p	--	--	--	--
3:13p	3:22p	3:28p	--	--	3:38p	3:47p	--	--	--	3:54p
4:03p	4:12p	4:18p	--	--	4:29p	4:38p	4:59p	5:09p	5:16p	5:24p
5:33p	5:42p	5:48p	--	--	5:59p	6:08p	--	--	--	6:15p
6:24p	6:33p	6:39p	--	--	6:49p	6:58p	--	--	--	7:05p

Proposed Route Map & Schedule



Route 1

Northbound						Southbound			Northbound	
Super Walmart	LRMC Hospital	Library	Walmart East 84	YMCA	Applebees	DFCS	Super Walmart	Wilder Road	Walthourville City Hall	Darsey Road
1	2	3	4	5	6	7	8	9	10	11
6:00a	6:09a	6:15a	6:24a	6:28a	6:38a	6:48a	7:00a	--	--	7:08a
7:15a	7:24a	7:30a	--	--	--	7:38a	7:50a	8:05a	8:12a	8:22a
8:30a	8:39a	8:45a	8:54a	8:58a	9:08a	9:18a	9:30a	--	--	9:38a
9:45a	9:54a	10:00a	10:09a	10:13a	10:23a	10:33a	10:45a	--	--	10:53a
11:00a	11:09a	11:15a	11:24a	11:28a	11:38a	11:48a	12:00p	--	--	12:08p
12:15p	12:24p	12:30p	--	--	--	12:38p	12:50p	1:05p	1:12p	1:22p
1:30p	1:39p	1:45p	1:54p	1:58p	2:08p	2:18p	2:30p	--	--	2:38p
2:45p	2:54p	3:00p	3:09p	3:13p	3:23p	3:33p	3:45p	--	--	3:53p
4:00p	4:09p	4:15p	--	--	--	4:23p	4:35p	4:50p	4:57p	5:07p
5:15p	5:24p	5:30p	5:39p	5:43p	5:53p	6:03p	6:15p	--	--	6:23p
6:30p	6:39p	6:45p	6:54p	6:58p	7:08p	7:18p	7:30p	--	--	7:38p

Route 2

Northbound					Southbound		
Happy Acres MHP	Walmart	LRMC Hospital	PX	Winn Army Hospital	Harbor Rain Apts	Walmart	Savannah Tech
1	2	3	4	5	6	7	8
6:00a	6:15a	6:25a	6:37a	6:42a	6:50a	7:03a	7:23a
7:30a	7:45a	7:55a	8:07a	8:12a	8:20a	8:33a	8:53a
9:00a	9:15a	9:25a	9:37a	9:42a	9:50a	10:03a	10:23a
10:30a	10:45a	10:55a	11:07a	11:12a	11:20a	11:33a	11:53a
12:00p	12:15p	12:25p	12:37p	12:42p	12:50p	1:03p	1:23p
1:30p	1:45p	1:55p	2:07p	2:12p	2:20p	2:33p	2:53p
3:00p	3:15p	3:25p	3:37p	3:42p	3:50p	4:03p	4:23p
4:30p	4:45p	4:55p	5:07p	5:12p	5:20p	5:33p	5:53p
6:00p	6:15p	6:25p	6:37p	6:42p	6:50p	7:03p	7:23p
7:30p	--	--	--	--	--	--	--

Route 3

Northbound			Southbound					Northbound
LRMC Hospital	Library	Harbor Rain Apts	Stewart Pines Apts	Library	Cypress Bend MHP	Happy Acres MHP	Food Lion	Happy Acres MHP
1	2	3	4	5	6	7	8	9
6:00a	6:05a	6:10a	6:12a	6:15a	6:30a	6:40a	6:55a	7:10a
7:30a	7:35a	7:40a	7:42a	7:45a	8:00a	8:10a	8:25a	8:40a
9:00a	9:05a	9:10a	9:12a	9:15a	9:30a	9:40a	9:55a	10:10a
3:30p	3:35p	3:40p	3:42p	3:45p	4:00p	4:10p	4:25p	4:40p
5:00p	5:05p	5:10p	5:12p	5:15p	5:30p	5:40p	5:55p	6:10p
6:30p	6:35p	6:40p	6:42p	6:45p	7:00p	7:10p	7:25p	7:40p

The proposed effective date for the new routes and schedule changes is November 1st, 2018.